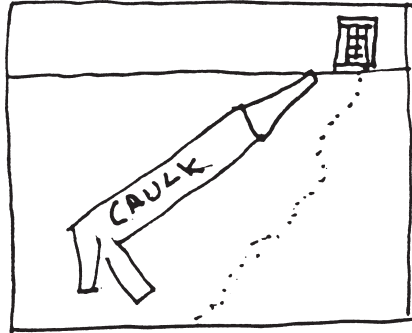


Ant Attack!

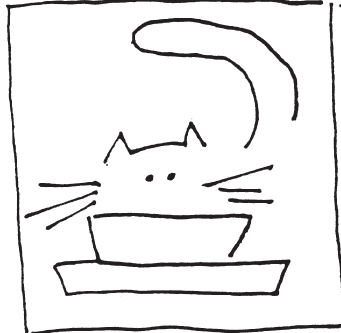
Preventing Ant Attacks

Keep it clean and don't invite ants into your living space! Ants are 'The Cleaning Ladies.'

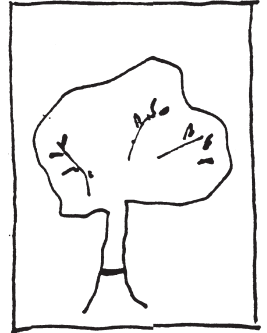
By keeping food in sealed containers and cleaning up after yourself, you may not need the Cleaning Ladies! Keep trash containers clean and empty them frequently. Rinse out cans and bottles to be recycled before you toss them in the bin.



Find out where the ants are coming in and caulk the entry point. Get caulk at a hardware store.



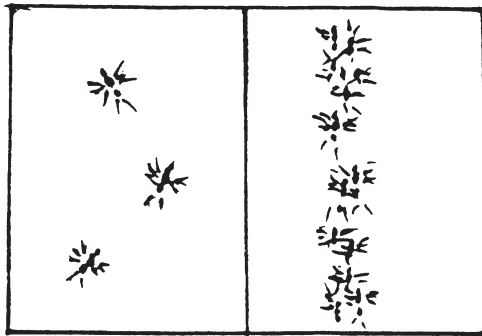
Don't feed the ants! Exclude ants from open food sources, such as pet food, by putting the pet dish in a larger dish or pan containing soapy water. Ants can't swim.



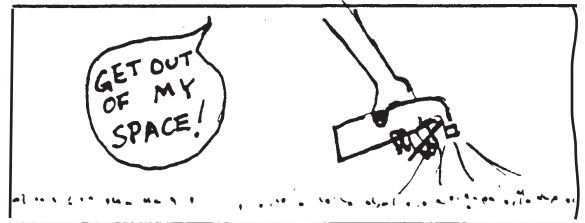
Tanglefoot™ around a plant's trunk will keep ants from climbing up and bringing in aphids.

Killing Worker Ants

Do you see just a few scattered ants, or trail of ants?



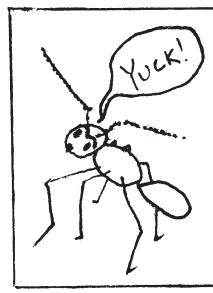
If there are just a few ants, they are probably food scouts. Wipe them up with a paper towel.



If there is a trail of ants, follow it to find out what they're eating. Clean up. Spray ants with water mixed with soap such as Dr. Bronner's™ Peppermint Castile Soup. Ants leave a scent trail for other ants to follow. Soap eliminates the scent and kills the ants.

Repelling Ants

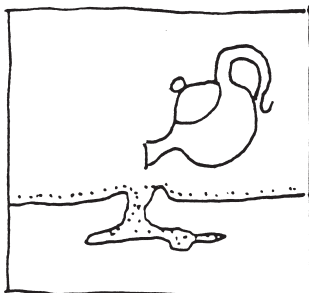
Repellents will rarely eliminate ants. They can help direct ant traffic to a bait, or to another location.



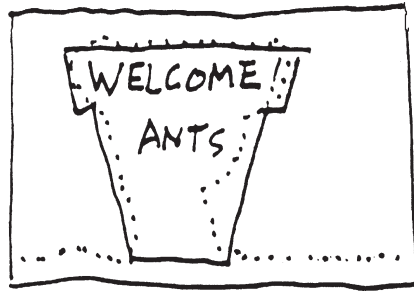
Repellents include orange oil, sold as 'Orange Guard,' baking soda, cinnamon, peppermint, pepper and other nontoxic materials. Pyrethrum, made of crushed chrysanthemum flowers, is a very effective repellent. Place material in cracks, crevices, and holes in the wall.

Destroying the Nest

Find the nest by following ant trails. Look for ants disappearing into the ground. To see if it's a nest, scrape the ground. There will be a network of holes through the dirt, and ants will swarm out.



Pour boiling water on the nest.



Lure ants away by moving their nest. Place food in a dirt-filled flowerpot. Place the pot right over the ant trail. When they move in, throw the pot away or kill the ants with boiling water.



Kill the queen and the nest dies.